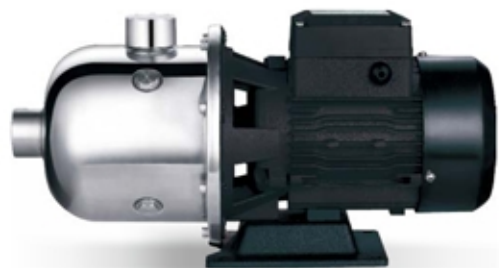


EDH

Stainless Steel Horizontal Multistage Pump



Application

- It is applicable to household water supply, equipment support, pipeline pressurization, garden watering, vegetable greenhouse watering, fish farming and poultry raising, industrial and mining, water supply and drainage of enterprises and high-rise buildings, central air conditioner and centralized heating circulation system, etc.

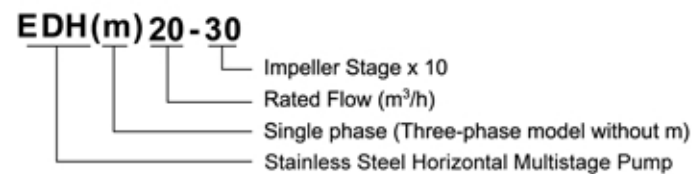
Pump

- AISI304 shaft
- Max. Liquid temperature: +85°C
- Altitude: up to 1000 m
- Max. suction: 8 m
- Max. inlet pressure: limited by max. operating pressure

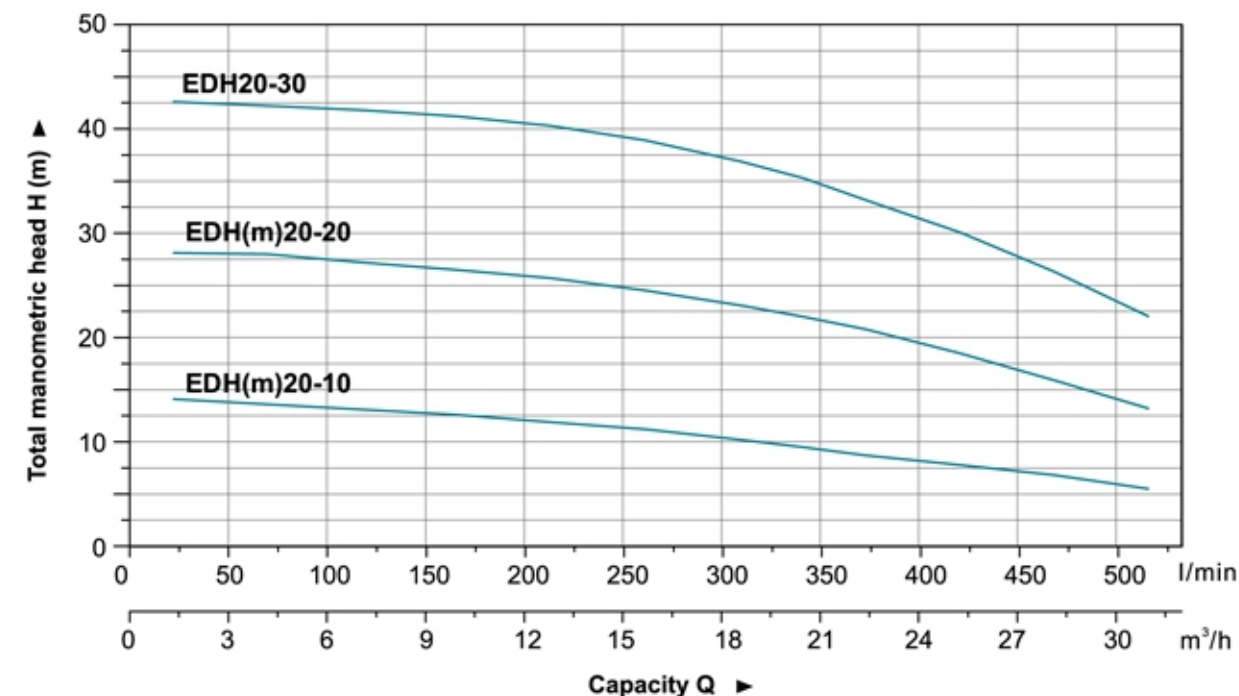
Motor

- Motor with copper winding
- Built-in thermal protector for single phase motor
- Insulation class: F
- Protection class: IP44
- Max. ambient temperature: +40°C

Identification Codes



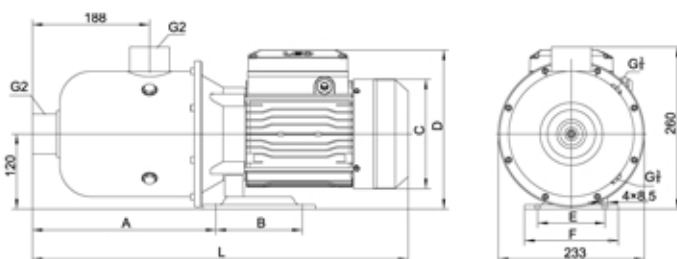
Hydraulic Performance Curves



Technical Data

Model	Power		Q (m ³ /h)	Q (l/min)												
	kW	HP		0	3	6	9	12	15	18	20	22	25	28	31	
EDH(m)20-10	1.1	1.5	H (m)	14.1	13.5	13.1	12.6	11.9	11.2	10.2	9.8	8.7	8	6.8	5.2	
EDH(m)20-20	2.2	3.0		28.1	28	27.2	26.5	25.7	24.5	23.1	22	20.8	18.5	15.9	13.2	
EDH20-30	4.0	5.5		42.6	42.2	41.5	41.2	40.3	38.9	36.9	35.3	33.2	30.1	26.3	22	

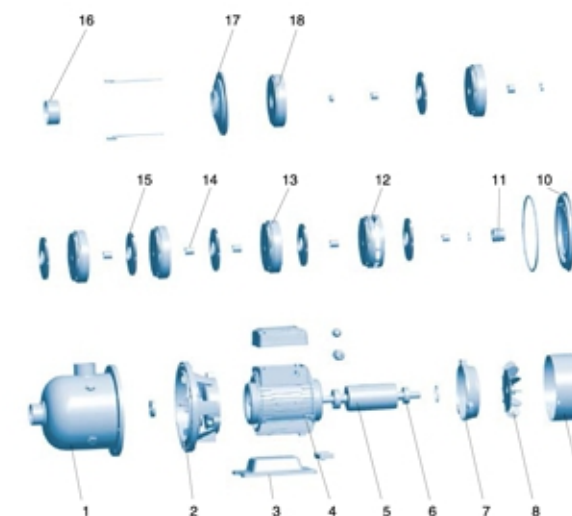
Dimension



Model	L	A	B	C	D	E	F
EDH(m)20-10	555	295	138	Ø164	245	108	150
EDH(m)20-20	602			Ø173	254		
EDH20-30	618	285	190	Ø194	261	170	200

Materials Table

No.	Part	Material
1	Pump body	AISI 304 / AISI 316
2	Support	ZL102
3	Bottom plate	Cast iron
4	Stator	
5	Rotor	
6	Bearing	
7	Rear cover	ZL102
8	Fan	PP
9	Fan cover	ØBF
10	Bracket cover	AISI 304
11	Mechanical seal	Carbon/Ceramic
12	Diffuser 3	AISI 304
13	Diffuser 2	AISI 304
14	Sleeve	AISI 304
15	Impeller	AISI 304
16	Spacer bush	AISI 304
17	Pressure plate	AISI 304
18	Diffuser 1	AISI 304



Package Information

Model	GW (Kgs)	L (mm)	W (mm)	H (mm)	Quantity (PCS/20 TEU)
EDH(m)20-10	20.6	595	275	302	553
EDH(m)20-20	27	640	275	302	525
EDH20-30	33	660	275	302	497

