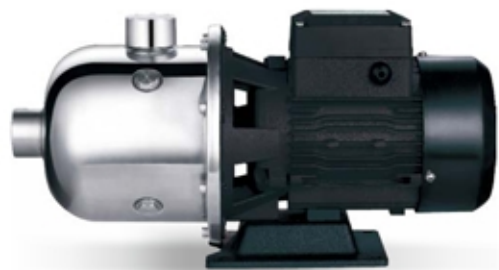


# EDH

## Stainless Steel Horizontal Multistage Pump



### Application

- It is applicable to household water supply, equipment support, pipeline pressurization, garden watering, vegetable greenhouse watering, fish farming and poultry raising, industrial and mining, water supply and drainage of enterprises and high-rise buildings, central air conditioner and centralized heating circulation system, etc.

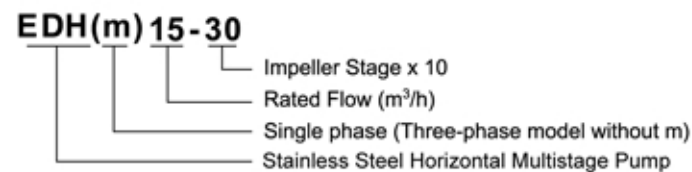
### Pump

- AISI304 shaft
- Max. Liquid temperature: +85°C
- Altitude: up to 1000 m
- Max. suction: 8 m
- Max. inlet pressure: limited by max. operating pressure

### Motor

- Motor with copper winding
- Built-in thermal protector for single phase motor
- Insulation class: F
- Protection class: IP44
- Max. ambient temperature: +40°C

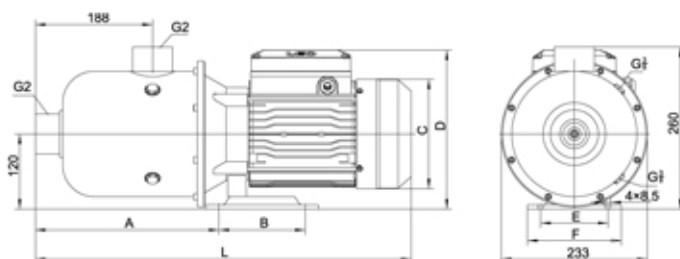
### Identification Codes



### Technical Data

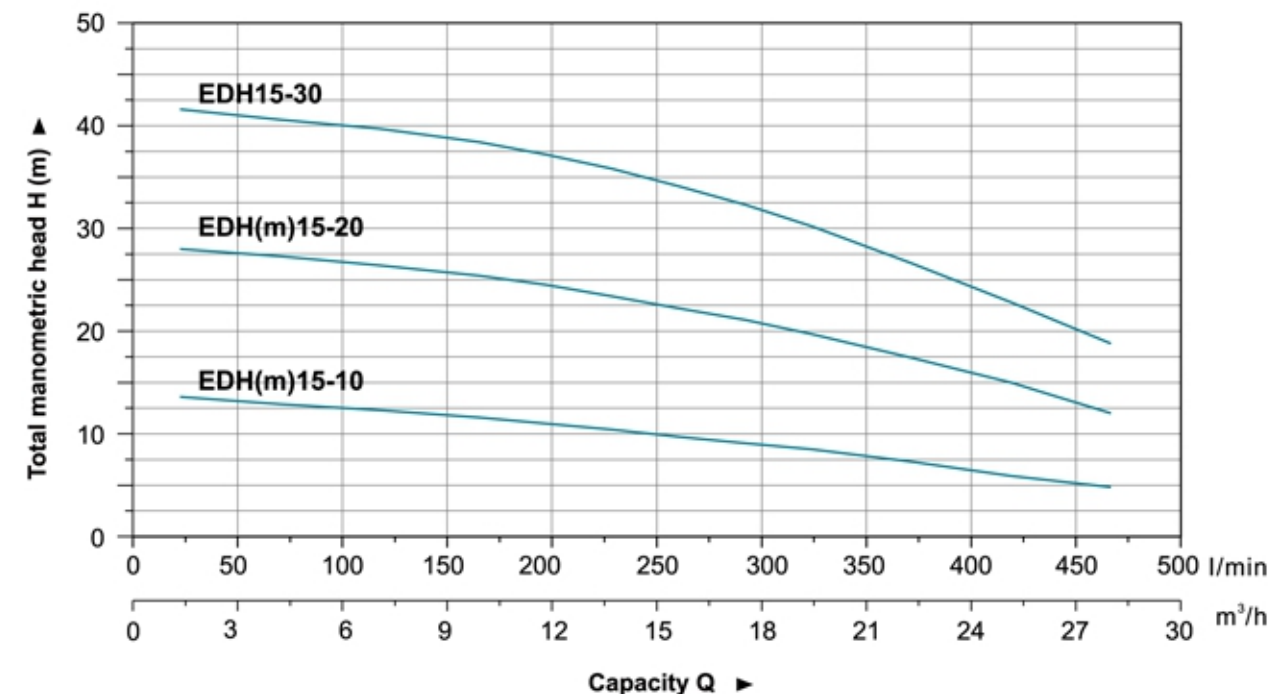
Model	Power		Q (m³/h)	Q (l/min)												
	kW	HP		0	3	6	9	11	13	15	17	19	22	25	28	
EDH(m)15-10	1.1	1.5	H (m)	13.6	12.7	12.5	11.6	11	10.4	9.7	9.1	8.5	7.7	5.9	4.8	
EDH(m)15-20	2.2	3.0		28	27.3	26.4	25.4	24.5	23.4	22.2	21.1	19.7	17.4	15	12	
EDH15-30	3.0	4.0		41.6	40.6	39.7	38.4	37.2	35.8	34.1	32.3	30.2	26.6	22.8	18.8	

### Dimension



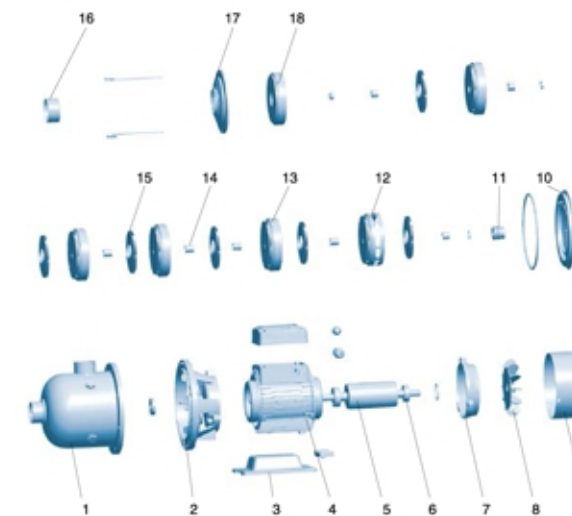
Model	L	A	B	C	D	E	F
EDH(m)15-10	555			Ø164	245		
EDH(m)15-20	602	295	138	Ø173	254	108	150
EDH15-30	618			Ø194	261		

### Hydraulic Performance Curves



### Materials Table

No.	Part	Material
1	Pump body	AISI 304 / AISI 316
2	Support	ZL102
3	Bottom plate	Cast iron
4	Stator	
5	Rotor	
6	Bearing	
7	Rear cover	ZL102
8	Fan	PP
9	Fan cover	Ø8F
10	Bracket cover	AISI 304
11	Mechanical seal	Carbon/Ceramic
12	Diffuser 3	AISI 304
13	Diffuser 2	AISI 304
14	Sleeve	AISI 304
15	Impeller	AISI 304
16	Spacer bush	AISI 304
17	Pressure plate	AISI 304
18	Diffuser 1	AISI 304



### Package Information

Model	GW (Kgs)	L (mm)	W (mm)	H (mm)	Quantity (PCS/20 TEU)
EDH(m)15-10	20.6	595	275	302	553
EDH(m)15-20	26.9	640	275	302	525
EDH15-30	30.2	660	275	302	497

