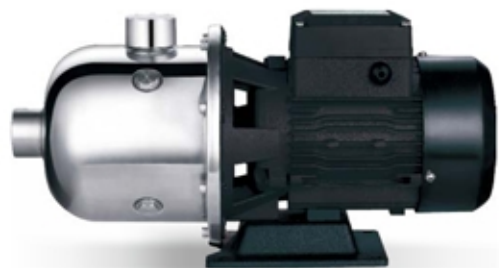


EDH

Stainless Steel Horizontal Multistage Pump



Application

- It is applicable to household water supply, equipment support, pipeline pressurization, garden watering, vegetable greenhouse watering, fish farming and poultry raising, industrial and mining, water supply and drainage of enterprises and high-rise buildings, central air conditioner and centralized heating circulation system, etc.

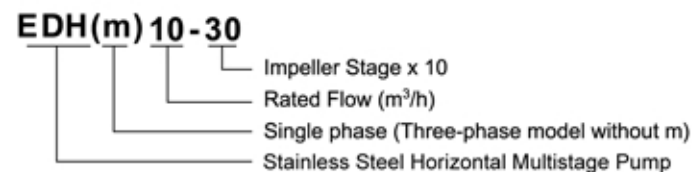
Pump

- AISI304 shaft
- Max. Liquid temperature: +85°C
- Altitude: up to 1000 m
- Max. suction: 8 m
- Max. inlet pressure: limited by max. operating pressure

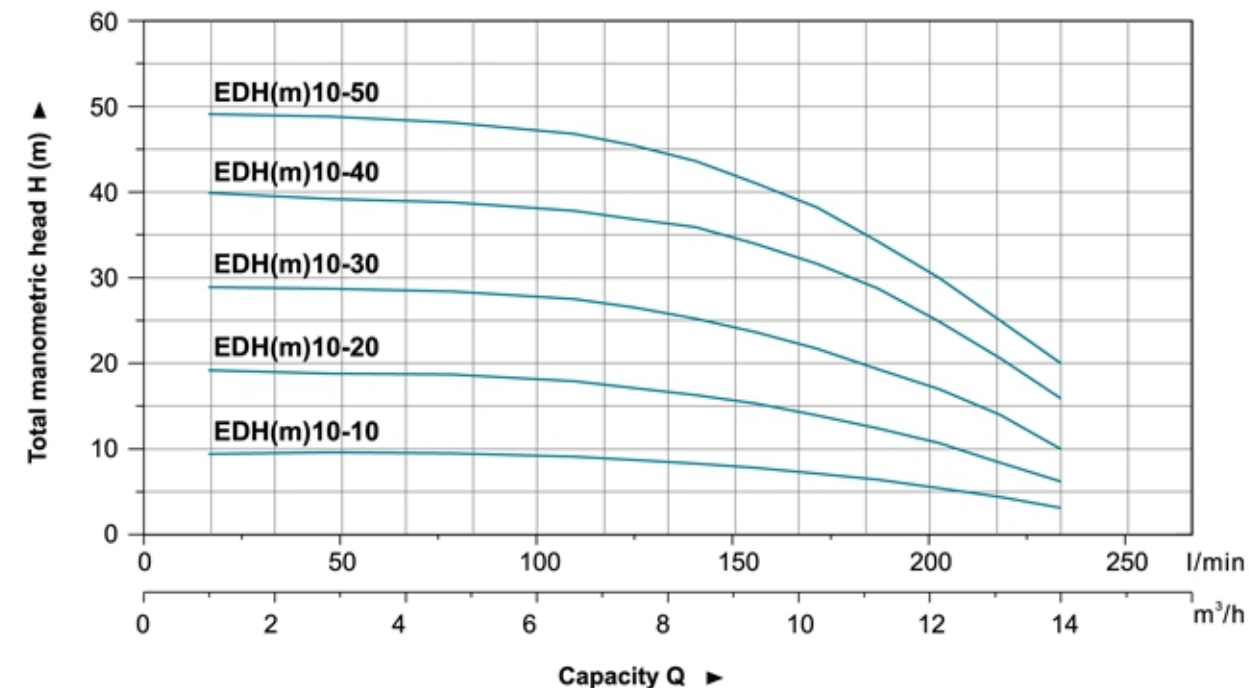
Motor

- Motor with copper winding
- Built-in thermal protector for single phase motor
- Insulation class: F
- Protection class: IP44
- Max. ambient temperature: +40°C

Identification Codes



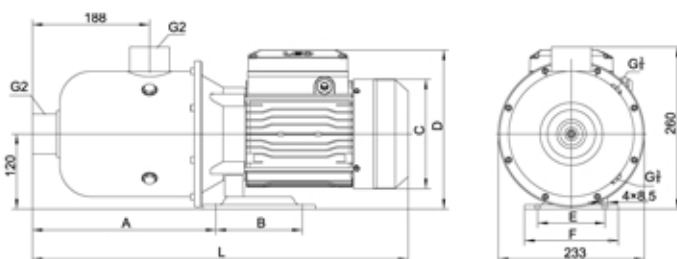
Hydraulic Performance Curves



Technical Data

Model	Power		Q (m³/h)	Q (l/min)													
	kW	HP		0	2	4	6	7	8	9	10	11	12	13	14		
EDH(m)10-10	0.75	1.0	H (m)	9.4	9.6	9.5	9.1	8.7	8.3	7.8	7.1	6.4	5.4	4.4	3.1		
EDH(m)10-20				19.2	18.8	18.7	17.9	17.1	16.3	15.3	13.9	12.4	10.7	8.4	6.2		
EDH(m)10-30				28.5	28.7	28.7	27.5	26.5	25.2	23.6	21.7	19.3	17	14	10		
EDH(m)10-40				37	39.9	40.1	38.7	37.2	35.9	33.9	31.6	28.7	24.9	19.7	15.9		
EDH(m)10-50				48.3	48.8	49.3	47.2	45.4	43.6	41	38.2	34.2	30	24.5	18		

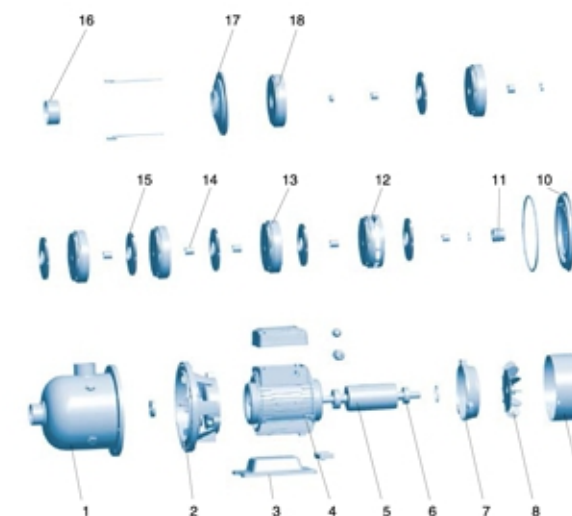
Dimension



Model	L	A	B	C	D	E	F
EDH(m)10-10	555			Ø164	245		
EDH(m)10-20							
EDH(m)10-30	602	295	138	Ø173	254	108	150
EDH(m)10-40							
EDH(m)10-50							

Materials Table

No.	Part	Material
1	Pump body	AISI 304/AISI 316
2	Support	ZL102
3	Bottom plate	Cast iron
4	Stator	
5	Rotor	
6	Bearing	
7	Rear cover	ZL102
8	Fan	PP
9	Fan cover	ØBF
10	Bracket cover	AISI 304
11	Mechanical seal	Carbon/Ceramic
12	Diffuser 3	AISI 304
13	Diffuser 2	AISI 304
14	Sleeve	AISI 304
15	Impeller	AISI 304
16	Spacer bush	AISI 304
17	Pressure plate	AISI 304
18	Diffuser 1	AISI 304



Package Information

Model	GW (Kgs)	L (mm)	W (mm)	H (mm)	Quantity (PCS/20 TEU)
EDH(m)10-10	19	595	275	302	553
EDH(m)10-20	19.2	595	275	302	553
EDH(m)10-30	21.5	595	275	302	553
EDH(m)10-40	22.4	640	275	302	525
EDH(m)10-50	26.7	640	275	302	525

